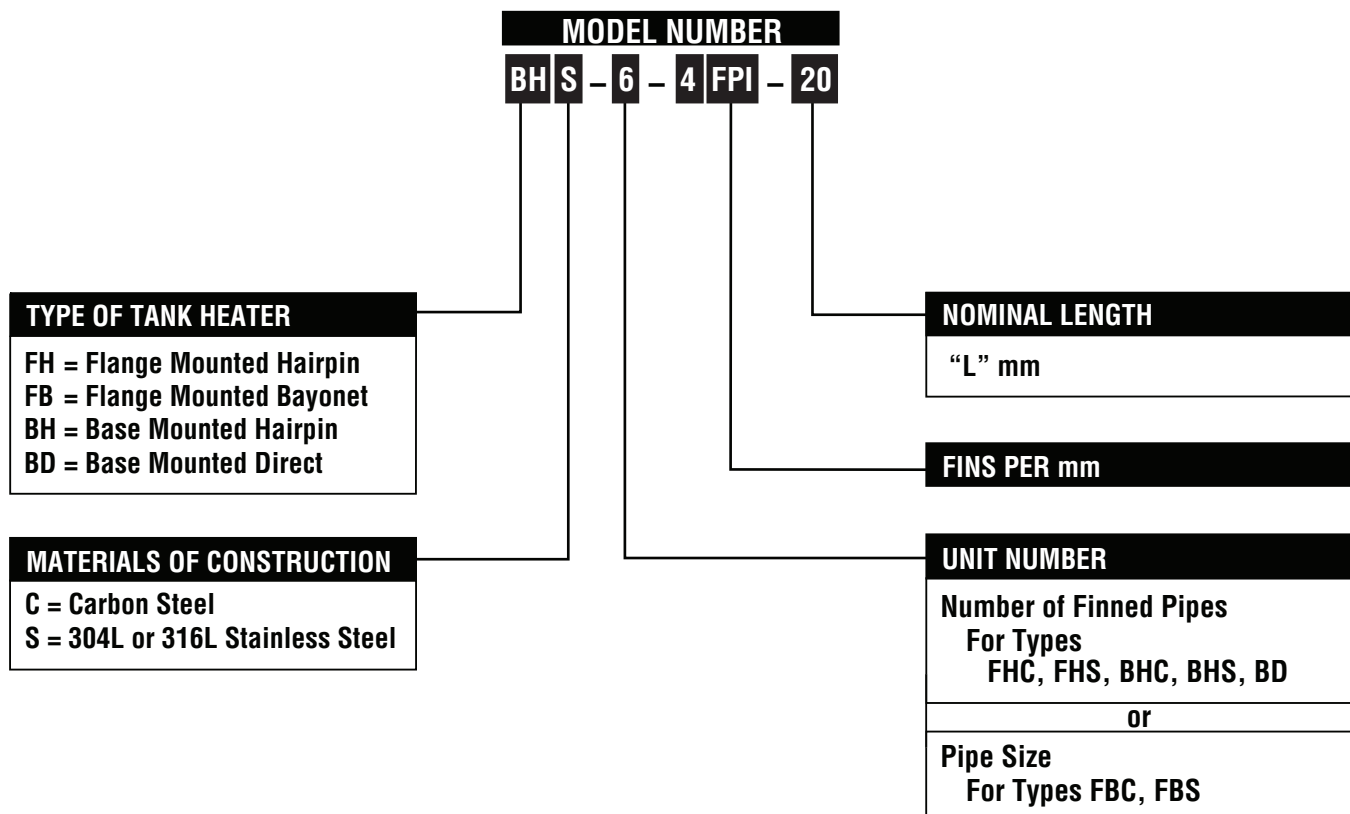
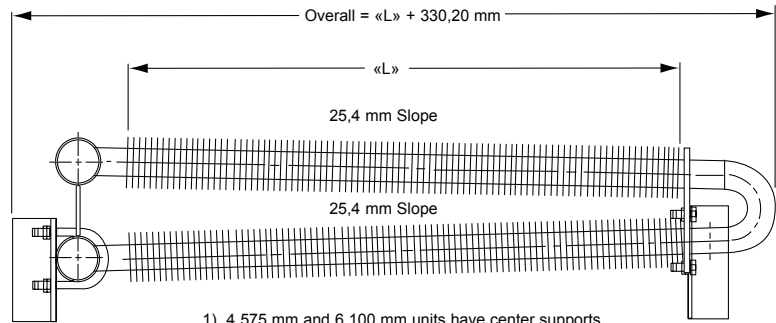
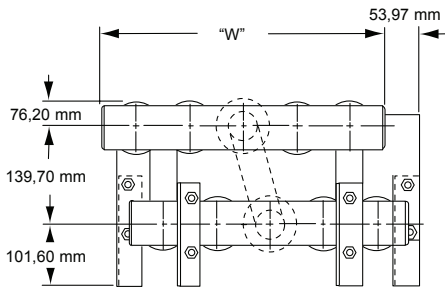


Model Number Selection





- 1) 4 575 mm and 6 100 mm units have center supports.
- 2) Header ends are beveled for on-site butt welding

Standard Sizes

Table C-310-1. BHC Carbon Steel Units

Type	Minimum Manhole Size (mm)	W (mm)	Nominal Length L (mm)	Surface area (m ²)			Weight (kg)		
				3 fpi	4 fpi	5 fpi	3 fpi	4 fpi	5 fpi
BHC-4	406	181	1525	5,48	7,06	8,64	49,03	58,57	62,65
			3050	10,96	14,12	17,28	89,89	103,51	117,13
			4575	16,54	21,18	25,83	133,02	153,45	173,88
			6100	22,02	28,24	34,47	174,34	201,58	228,36
BHC-6	457	260	1525	8,27	10,59	12,91	71,73	81,72	92,16
			3050	16,54	21,18	25,83	133,48	153,91	173,88
			4575	24,71	31,77	38,83	197,49	227,91	258,33
			6100	32,98	42,36	51,75	258,78	299,64	340,05
BHC-8	559	340	1525	10,96	14,12	17,28	94,43	108,05	121,97
			3050	22,02	28,24	34,47	176,61	203,85	230,63
			4575	32,98	42,36	51,75	261,50	302,36	342,77
			6100	43,94	56,48	68,93	343,68	398,16	451,73
BHC-10	610	419	1525	13,75	17,65	21,55	117,13	133,93	150,73
			3050	27,50	35,30	43,11	219,74	253,79	287,38
			4575	41,25	52,95	64,66	352,52	376,82	427,21
			6100	55,00	70,60	86,21	428,12	496,22	563,41

Table C-310-2. BHS Stainless Steel Units

Type	Minimum Manhole Size (mm)	W (mm)	Nominal Length L (mm)	Surface area (m ²)			Weight (kg)		
				3 fpi	4 fpi	5 fpi	3 fpi	4 fpi	5 fpi
BHS-4	406	181	1525	4,09	5,11	6,22	31,78	34,50	36,77
			3050	8,18	10,31	12,45	56,30	61,29	66,74
			4575	12,17	15,42	18,67	82,63	90,35	98,52
			6100	16,26	20,62	24,99	107,14	116,22	128,03
BHS-6	457	260	1525	6,13	7,71	9,38	45,85	49,94	54,03
			3050	12,17	15,42	18,67	82,63	90,35	98,52
			4575	18,30	23,23	28,06	121,67	133,48	145,28
			6100	24,43	30,94	37,44	158,45	174,34	189,77
BHS-8	559	340	1525	8,18	10,31	12,45	60,38	65,38	70,82
			3050	16,26	20,62	24,99	108,96	119,86	130,30
			4575	24,43	30,94	37,44	160,72	176,61	192,50
			6100	32,52	41,25	49,98	209,75	230,63	251,97
BHS-10	610	419	1525	10,13	12,91	15,61	74,46	81,27	87,62
			3050	20,35	25,73	31,21	135,75	148,91	162,08
			4575	30,47	38,65	46,82	199,76	219,74	239,26
			6100	40,69	51,56	62,43	261,05	287,38	313,71

Materials of Construction

Pipes: 31,75 mm NPS Sch. 40 Seamless Steel (42 mm OD x 3,55 mm Wall)

Fins: 0,91 mm Thick Helically Wound Steel «L» Foot

Headers:

50,80 mm NPS Sch. 40 Seamless Steel (60,32 mm OD x 3,91 mm Wall)

Return Bends: A-234 Long Radius Forged Steel Sch. 40

Mechanical Design: 31 bar, 343 C°, Hydro Test 47,5 bar

NOTE: Sch. 80 Construction is available.

Materials of Construction

Pipes: 31,75 mm NPS Sch. 10, 304L SS (42 mm OD x 2,76 mm Wall)

Fins: 0,50 mm Thick Helically Wound 304L SS «L» Foot

Headers:

50,80 mm NPS Sch. 40, 304L SS (60,32 mm OD x 3,91 mm Wall)

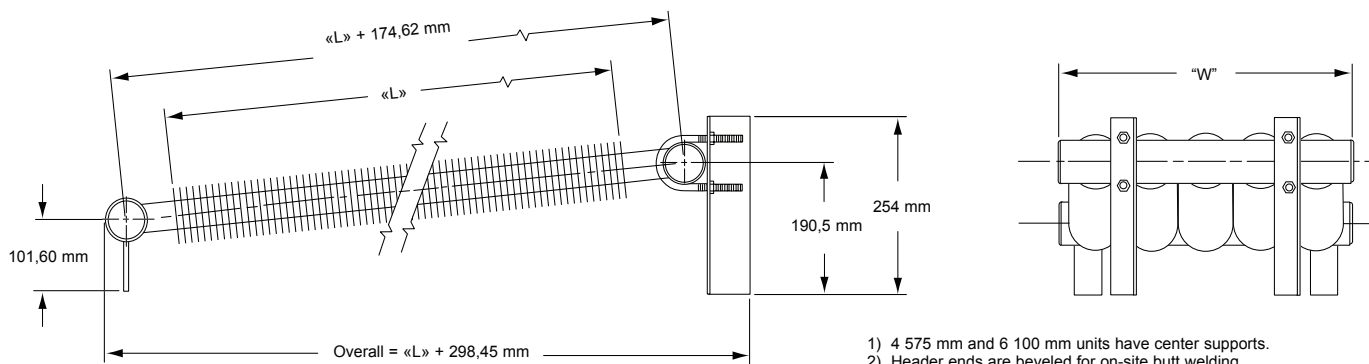
Return Bends: A-403 Long Radius 304L SS Sch. 10

Mechanical Design: 31 bar, 343 C°, Hydro Test 47,5 bar

NOTE: Type 316L SS Construction is available.

All dimensions and weights are approximate. Use certified print for exact dimensions. Design and materials are subject to change without notice.

Base Mounted Direct Type BD



- 1) 4 575 mm and 6 100 mm units have center supports.
- 2) Header ends are beveled for on-site butt welding

Standard Sizes

Table C-311-1. BD Carbon Steel Units									
Type	Minimum Manhole Size (mm)	W (mm)	Nominal Length L (mm)	Surface area (m ²)			Weight (kg)		
				3 fpi	4 fpi	5 fpi	3 fpi	4 fpi	5 fpi
BD-2	356	181	1525	2,79	3,53	4,37	27,24	30,87	34,05
			3050	5,48	7,06	8,64	47,22	54,93	61,29
			4575	8,27	10,59	13,01	70,82	81,27	91,25
			6100	10,96	14,12	17,28	91,25	104,87	118,49
BD-3	406	260	1525	4,18	5,30	6,50	39,04	44,04	49,49
			3050	8,27	10,59	12,91	69,92	80,36	90,35
			4575	12,45	15,89	19,42	103,06	118,49	133,48
			6100	16,54	21,18	25,83	133,93	154,36	174,34
BD-4	508	340	1525	5,48	7,06	8,64	50,85	57,66	64,47
			3050	8,27	14,12	17,28	92,16	105,78	118,95
			4575	12,45	21,18	25,92	135,29	155,72	176,15
			6100	16,54	28,24	34,47	176,61	203,85	230,63
BD-5	559	419	1525	6,87	8,83	10,78	62,65	71,28	79,45
			3050	13,75	17,65	21,55	113,95	130,75	147,55
			4575	20,62	26,48	32,33	167,53	192,95	218,37
			6100	27,50	35,30	43,11	218,83	252,88	286,47

Materials of Construction

Pipes: 31,75 mm NPS Sch. 40 Seamless Steel (42 mm OD x 3,55 mm Wall)

Fins: 0,91 mm Thick Helically Wound Steel «L» Foot

Headers:

50,80 mm NPS Sch. 40 Seamless Steel (60,32 mm OD x 3,91 mm Wall)

Mechanical Design: 31 bar, 343 C°, Hydro Test 47,5 bar

NOTE: Sch. 80 Construction is available.

These units are available only in Carbon Steel

All dimensions and weights are approximate. Use certified print for exact dimensions. Design and materials are subject to change without notice.



Tank Heater Selection Work Sheet

Tank Information

Tank Reference Number.....
 Tank Type.....
 Tank Material.....
 Dimensions mm
 Insulated? If yes, how thick? mm
 Open Top?.....
 Tank Level (% full) or Fluid Volume.....
 Design Ambient Air Temperature °C
 Design Wind Velocity (if outside and not insulated)..... m/S

Steam Information

Steam Pressure bar
 Saturated? If not, what temperature? °C

Fluid Information

Type of Fluid.....
 Properties (not required for water).....
 1. Specific Gravity at °C
 or Density kg/m³ at °C
 2. Specific Heat KJ/Kg x °C at °C
 3. Viscosity (at least one value required, preferably two)
 units
 at °C
 at °C

Heating Requirements

A. Through Load m³/h at °C not applicable
 B. Heat-Up Load from °C to °C in hours not applicable
 C. Maintenance Load to Hold °C
 D. Total Heat Load (if known) KJ/h

Tank Heater Requirements

1. Materials of Construction
 A. Carbon Steel.....
 B. Type 304L Stainless Steel.....
 C. Type 316L Stainless Steel.....
 2. Type of Unit
 A. Flange Mounted (preference? Hairpin Bayonet)
 B. Base Mounted (preference? Hairpin Direct)
 If flange mounted, is std. flange size OK? If not, specify size

Other Information

.....

Unit & Tank Heaters