



FT-4000 Series Float and Thermostatic Steam Trap

All Stainless Steel
For Pressures to 32 bar... Capacities to 490 kg/hr

Description

With the FT-4000 Series, you can install a float and thermostatic trap in any piping configuration with little or no repiping. You get the reliability of the float and thermostatic operating principle, plus all the benefits of all-stainless steel construction.

- A sealed, tamperproof package
- A compact, lightweight trap
- Exceptional corrosion resistance
- A one-year guarantee against defective materials and workmanship

FT-4000 Series Float & Thermostatic steam traps combine savings in three important areas: energy, installation and replacement. Mounting the FT-4000 on universal connectors with integral strainers provides quick, easy in-line replacement with added protection from dirt and scale.

Maximum Operating Conditions

Maximum allowable pressure (vessel design)†:
33 bar @ 315°C

Maximum operating pressure:

Model FT-4075:	5 bar saturated steam
Model FT-4150:	10 bar saturated steam
Model FT-4225:	16 bar saturated steam
Model FT-4300:	21 bar saturated steam
Model FT-4465:	32 bar saturated steam

Materials

Body:	ASTM A240 Grade 304L
Loose Flange:	Zinc Plated Steel (stainless steel available on request)
Internals:	All stainless steel – 304
Valve and seat:	Stainless steel
Thermostatic air vent:	Wafer type-stainless steel with Hastelloy element

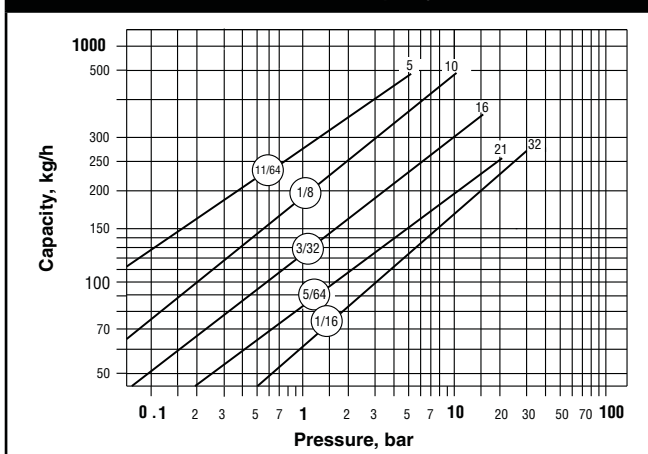
Specification

Steam trap shall be float and thermostatic type having stainless steel construction, stainless steel valve, seat and float, for use on an IS-2 connector with integral strainer or TVS-4000 trap valve station. Integral thermostatic element shall be wafer type constructed of Hastelloy and stainless steel. Thermostatic element shall be capable of withstanding 25°C of superheat and be resistant to water hammer damage.

How to order

- Specify model number
- Select 360° connector style (IS-2 or TVS 4000)
- Specify maximum working pressure that will be encountered or orifice size
- Specify any options required

Table ST-136-1. Model FT-4000 Series Capacity



† May be derated depending on flange rating and type.



TVS 4000 Trap Valve Station with FT-4000 Float and Thermostatic Trap



IS-2 Connector with FT-4000 Float and Thermostatic Trap

All dimensions and weights are approximate. Use certified print for exact dimensions. Design and materials are subject to change without notice.

Armstrong International SA • Parc Industriel des Hauts-Sarts (2^e Avenue) • 4040 Herstal • Belgium

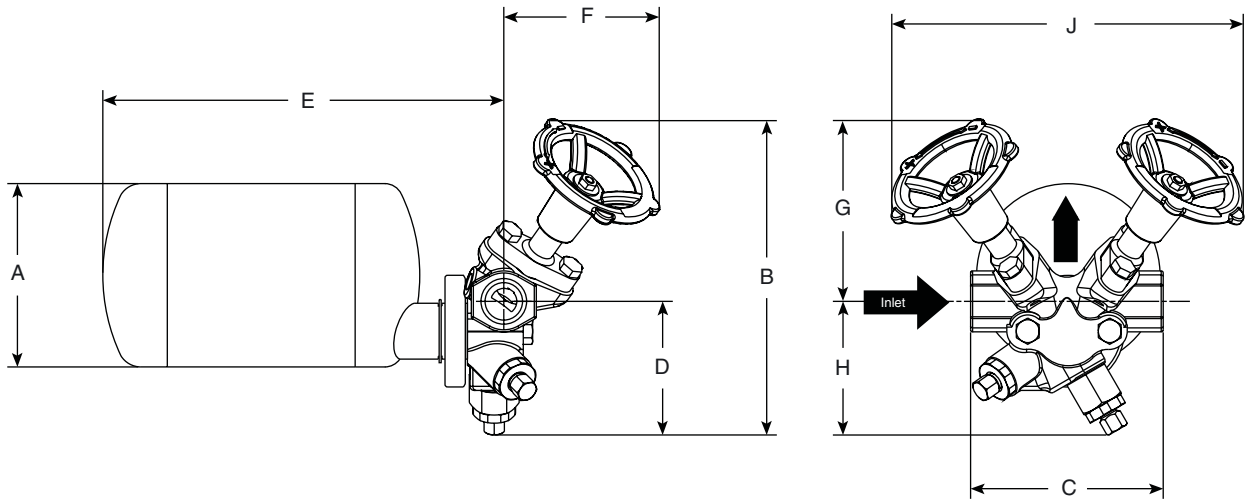
Tel.: +32 (0)4 240 90 90 • Fax: +32 (0)4 240 40 33

www.armstronginternational.eu • info@armstronginternational.eu

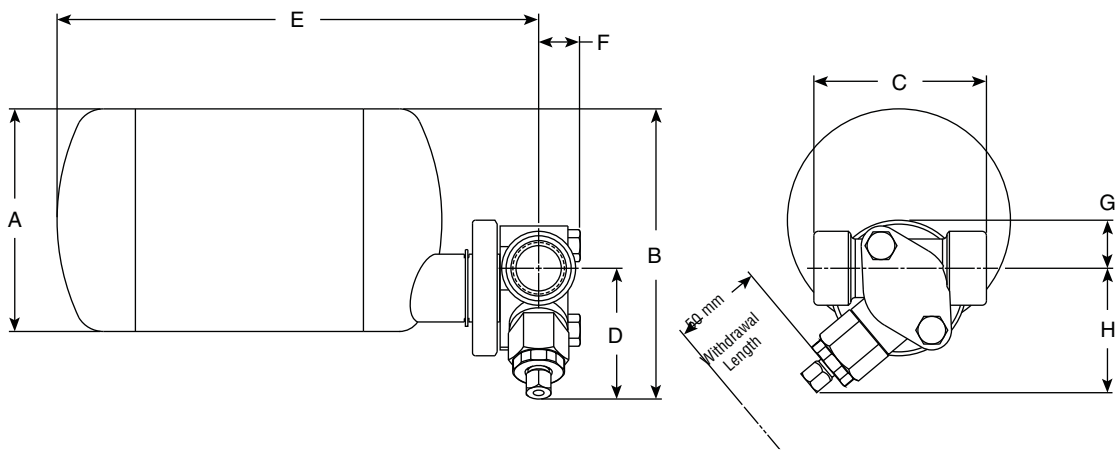
FT-4000 Series Float and Thermostatic Steam Trap

All Stainless Steel

For Pressures to 32 bar... Capacities to 490 kg/hr



Series FT-4000 with TVS 4000 Trap Valve Station



Series FT-4000 With IS-2 Connector with Integral Strainer and Optional Blowdown Valve

Table ST-137-1. FT-4000 Series Float and Thermostatic Steam Trap

Trap Series	FT-4000		
	IS-2 Connector With Integral Strainer		TVS 4000 Connector
Model	mm	mm	mm
Pipe Connections	15 – 20	25	15 – 20
"A" Trap Diameter	114	114	114
"B" Total Height	149	149	198
"C" Face-to-Face	89	101	120
"D" Connection Q to Bottom	67	67	83
"E" Connection Q to Outside of Trap	255	259	250
"F" Connection Q to Front of Connector	22	22	98
"G" Connection Q to Top	25	25	114
"H" Connection Q to Bottom of Connector	64	64	83
"J" Width across Handwheels (valve open)	N/A		221
Test Port Connection	N/A		1/4 NPT
Maximum Operating Pressure (saturated steam)	32 bar		
Maximum Allowable Pressure (vessel design)	33 bar @ 315°C		
Trap Only Weight, in kg	2,8		
Trap and Connector Weight, in kg	4		5,8